



Heavy Duty Package

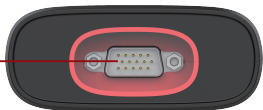
Quick Start Guide

Knowledge of THINKDIAG HML Module

THINKDIAG HML module works as a vehicle communication interface device, which is used read the vehicle data and then send it to the diagnostic tool via Bluetooth /Wi-Fi communication or USB connection. The LED indicators enable you to easily identify the working status of the module.

Diagnostic socket

(For connecting the diagnostic cable.)



LED Indicators

Displays the working status of the module. It is defined as follows:

1. Power: It illuminates solid red when the module is powered on.
2. Vehicle: While the module is communicating with the vehicle, the indicator lights up and flashes. Otherwise, it will not illuminate.
3. Bluetooth: Blue indicates the module is working in Bluetooth mode.
4. I/O: It lights up when the module is connected to the diagnostic tool via USB cable.



USB port

(For connecting it to the diagnostic tool to perform vehicle diagnosis.)



THINKDIAG HML

Model: TKD03

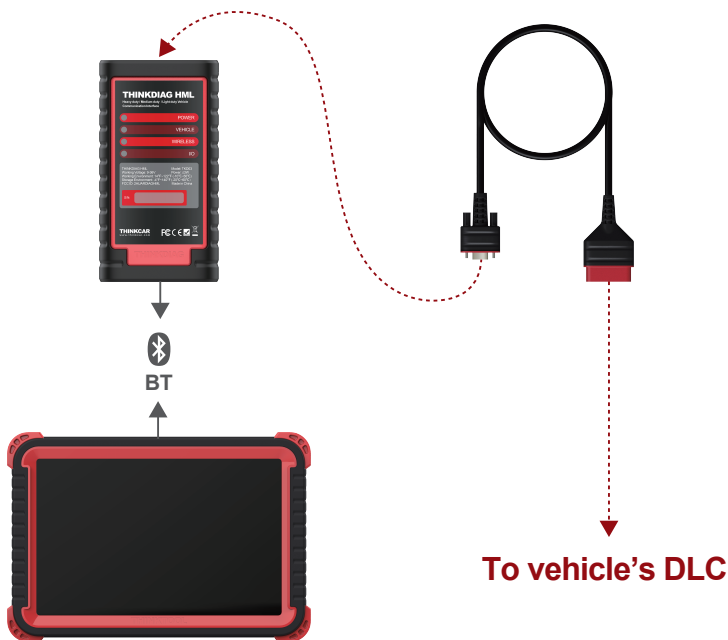
Working Voltage: 9~36V

Power: ≤3W

Working Environment: 14°F~122°F (-10°C~50°C)

Storage Environment: -4°F~140°F (-20°C~60°C)

Working Principle



Activate THINKDIAG HML Module & Download Software

If you had a diagnostic tool of 12V passenger car configuration and intend to experience the diagnosis of commercial vehicles, follow the steps described below to activate the module:

Note: Please make sure that the diagnostic tool is properly connected to the Internet before proceeding this step.

1. Log in the system using the existing user account of Passenger Vehicle Configuration, and then tap “⚙️ Setting” -> “Activate VCI”.

Serial Number

Activation Code

ACTIVATE

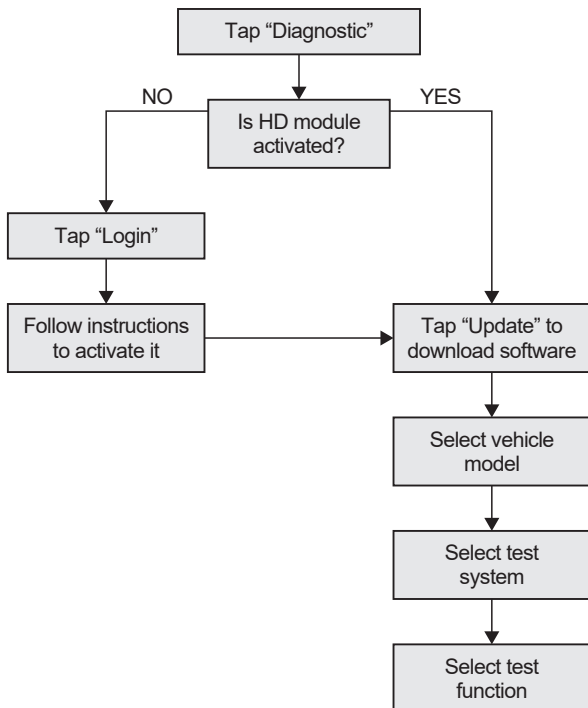
2. Input the Product S/N and Activation Code, which can be obtained from the included Password Letter, then tap “Activate” to activate the module.

The screenshot displays the activation interface. At the top, there are two input fields: "Serial Number" and "Activation Code". To the right of these fields is a red-bordered box containing the text "Enter SN and Activation Code to activate your device". Below the input fields, there is a white box with a red border containing the THINKCAR logo and the following information:

THINKCAR
Serial Number:
981564861532
Activation Code:
48643156

3. Tap “Upgrade” to enter upgrade center, tap “Update” to download and install it.

Start Diagnostics



Warranty Terms

This warranty applies only to users and distributors who purchase THINKCAR products through normal procedures. Within one year from the date of delivery, THINKCAR warrants its electronic products for damages caused by defects in materials or workmanship. Damages to the equipment or components because of abuse, unauthorized modification, use for non-designed purposes, operation in a manner not specified in the instructions, etc. are not covered by this warranty. The compensation for dashboard damage caused by the defect of this equipment is limited to repair or replacement. THINKCAR does not bear any indirect and incidental losses. THINKCAR will judge the nature of the equipment damage according to its prescribed inspection methods. No agents, employees or business representatives of THINKCAR are authorized to make any confirmation, notice or promise related to THINKCAR products. Thinkcar Tech Co., Ltd

Service Line: 1-833-692-2766

Customer Service Email: support@thinkcarus.com

Official Website: www.thinkcar.com

Products tutorial, videos, Q&A and coverage list are available on Thinkcar official website.

Follow us on



[@thinkcar.official](https://www.facebook.com/thinkcar.official)



[@ObdThinkcar](https://twitter.com/ObdThinkcar)